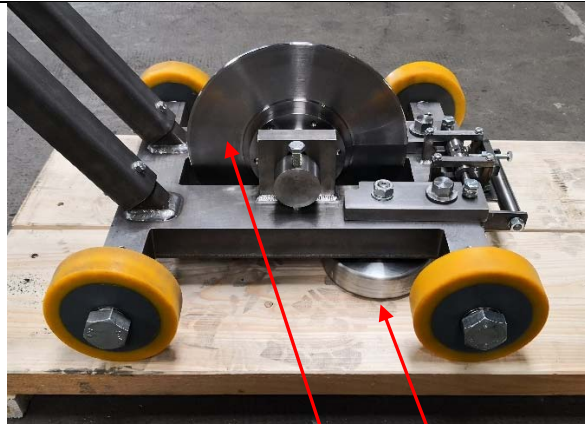


Consulting engineer for  
development and process  
engineering of rubber profiles  
Trade with Profiles for road  
construction

*WGD*

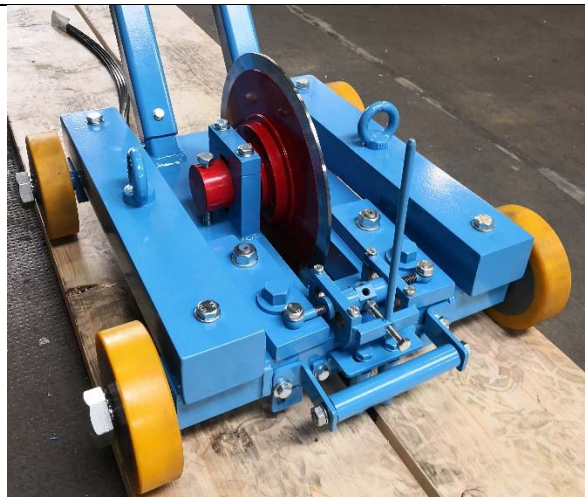
**WGD Filler Profile installation machine,  
produced by  
Lewe Maschinenbau, Coesfeld, Germany**



Machine with compress rolls and insertion push-in disc, 90 kg weight, extra weights of 20 kg each not shown



Handle for easy pushing forward of machine or easy lift up of front axis and push-in disc, demountable



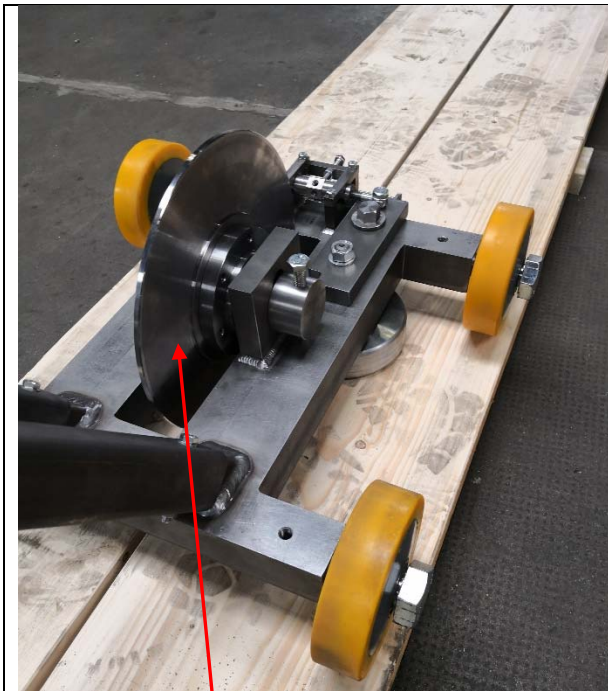
Machine with mounted two extra weights of 20 kg each, total 130 kg weight



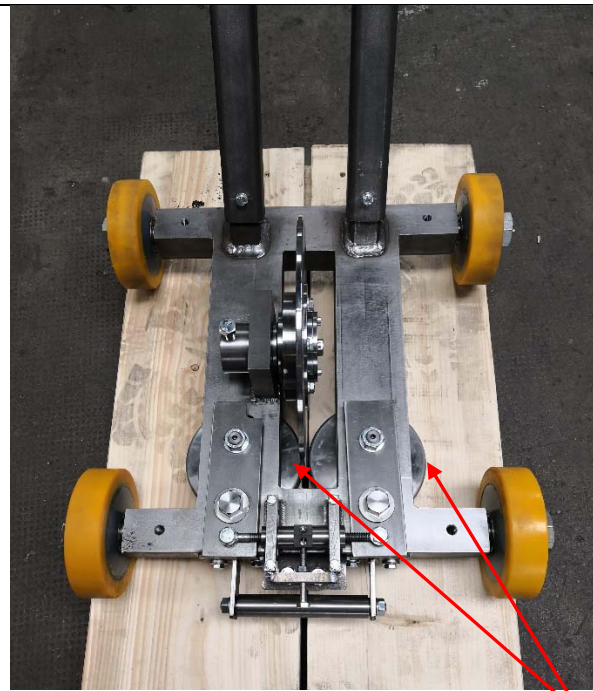
Left side view, red push-in disc, handle demountable

USt-ID-Nummer  
DE 242604690

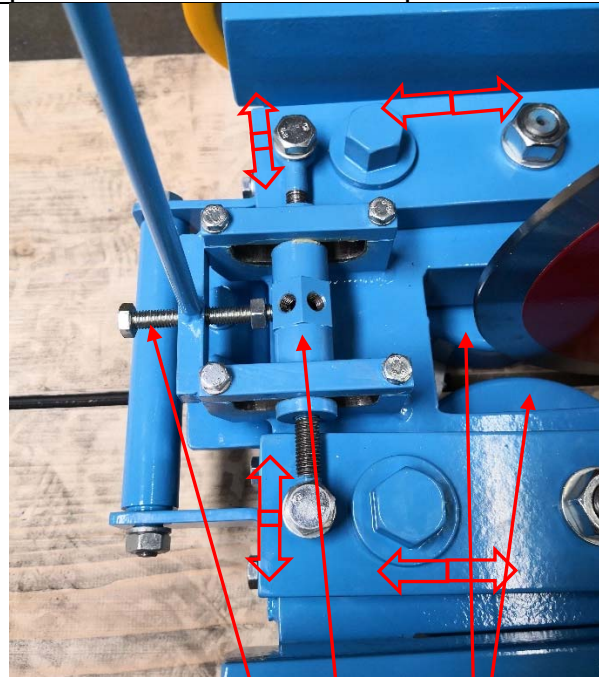
Bank Account  
Volksbank Nottuln  
IBAN DE43 4016 4352 7809 7738 00  
BIC GENODEM1CNO



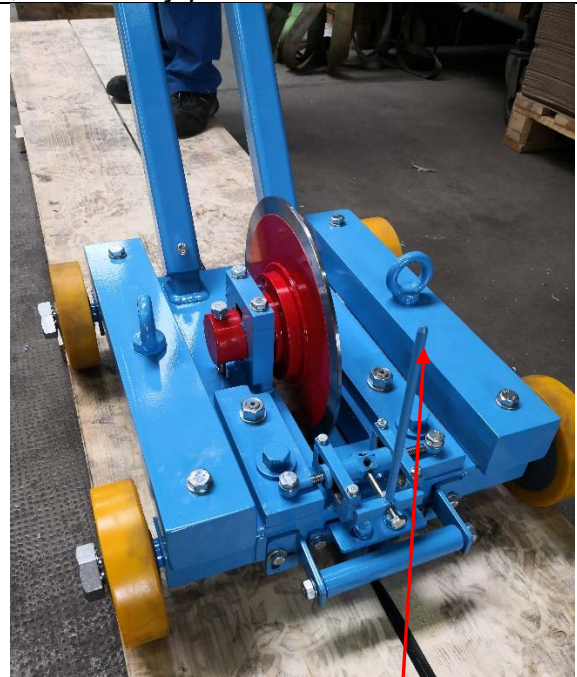
Machine on model of joint, open view to push-in disc on installed profile



Open view on joint, two compress rolls ,followed by push-in disc



Front details:  
symmetric spreader  
for press rolls  
longitudinal shifter of press rolls' position

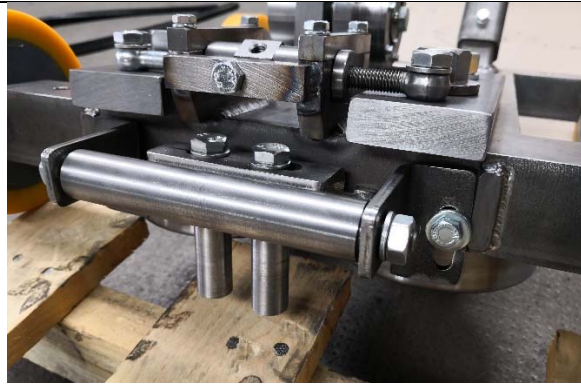


Front view of machine,  
red push-in disc,  
blue joint direction sight

USt-ID-Nummer  
DE 242604690

Bank Account  
Volksbank Nottuln  
IBAN DE43 4016 4352 7809 7738 00  
BIC GENODEM1CNO

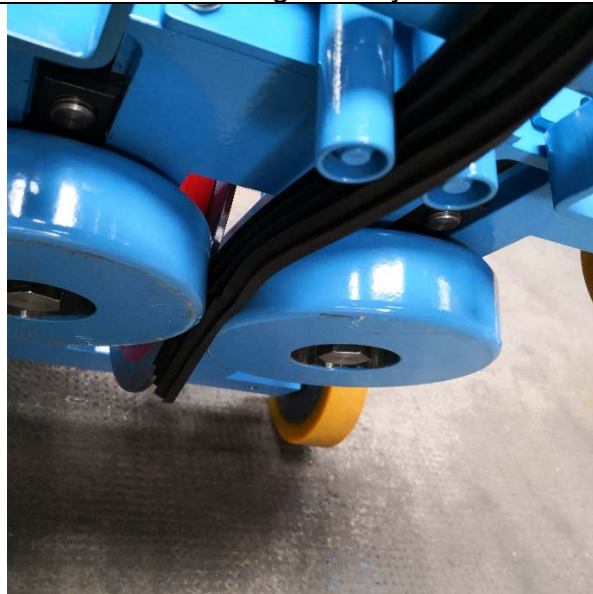




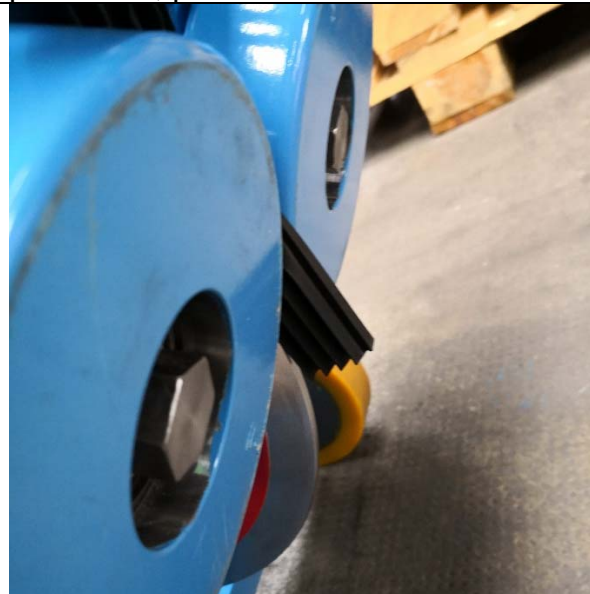
Guiding rolls' distance is adjustable,  
horizontal roll's height is adjustable



Underside of machine, guide rolls,  
press rolls, push-in disc



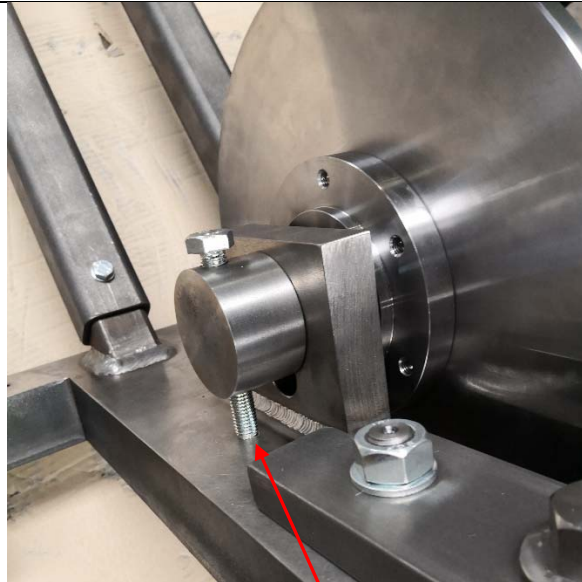
Underside of machine, the way of profile  
towards the press rolls



Underside of machine, the way of  
profile through press rolls and push-in  
disc

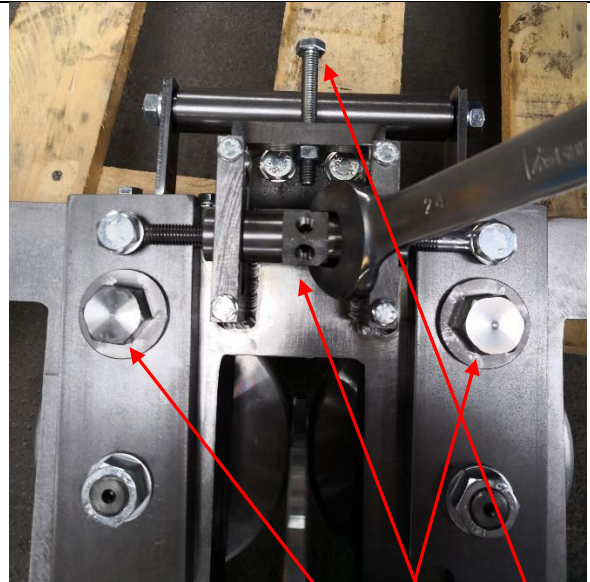
USt-ID-Nummer  
DE 242604690

Bank Account  
Volksbank Nottuln  
IBAN DE43 4016 4352 7809 7738 00  
BIC GENODEM1CNO



Adjust vertical position of axis for push-in disc:

- 1) Loose center disc holder screw on opposite side
- 2) turn elevating screw
- 3) Tighten center disc holder screw on opposite side

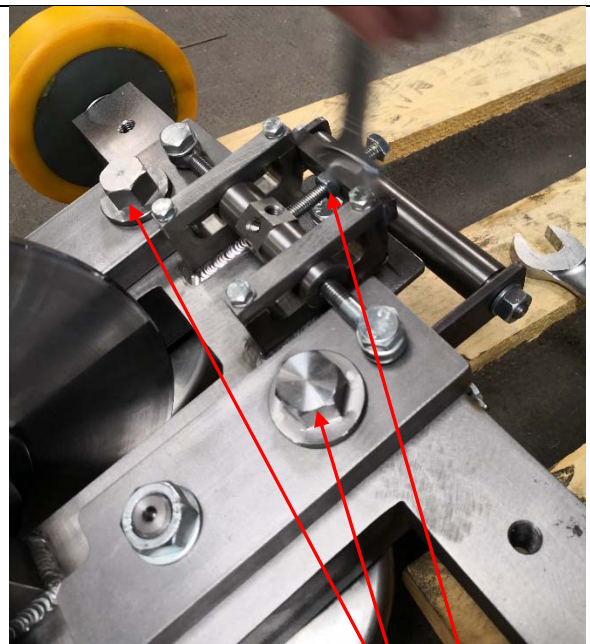


Adjust distance between compress rolls:

- 1) Loose fixing screws
- 2) turn out front set screw
- 3) turn symmetric spreader
- 4) Tighten fixing screws



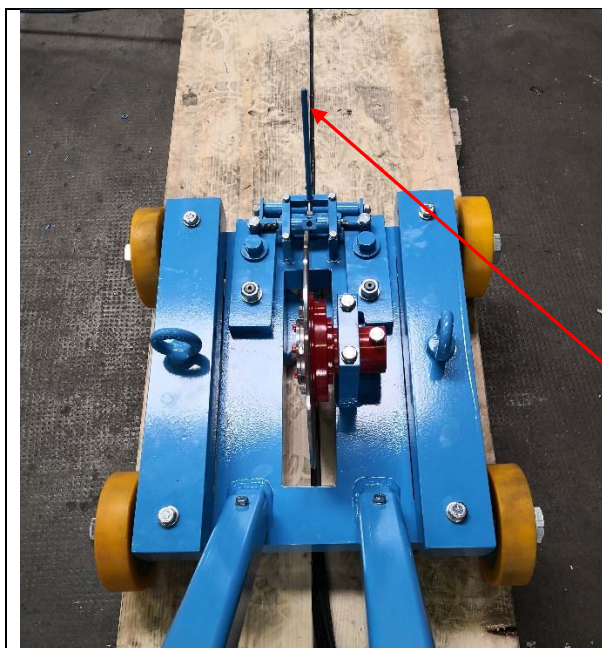
Installed profile, correct depth: profile's lips below bevel cut of joint chamber



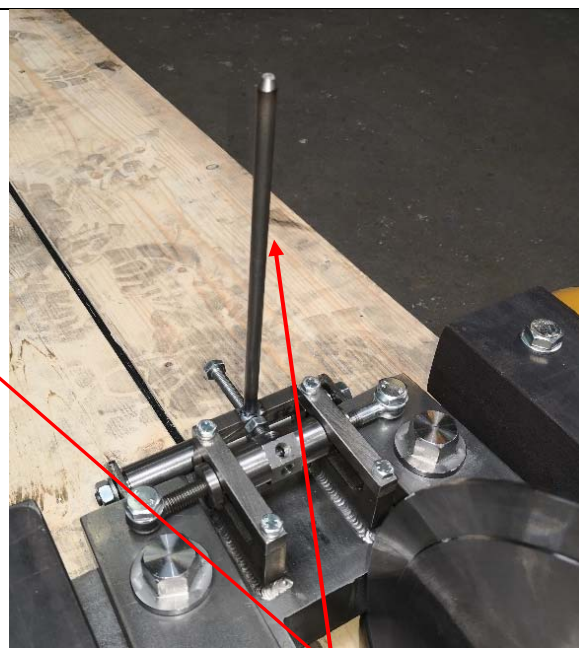
Adjust lengthwise position of compress rolls, relative to push-in disc:

- 1) Loose fixing screws
- 2) turn front set screw
- 3) Tighten fixing screws

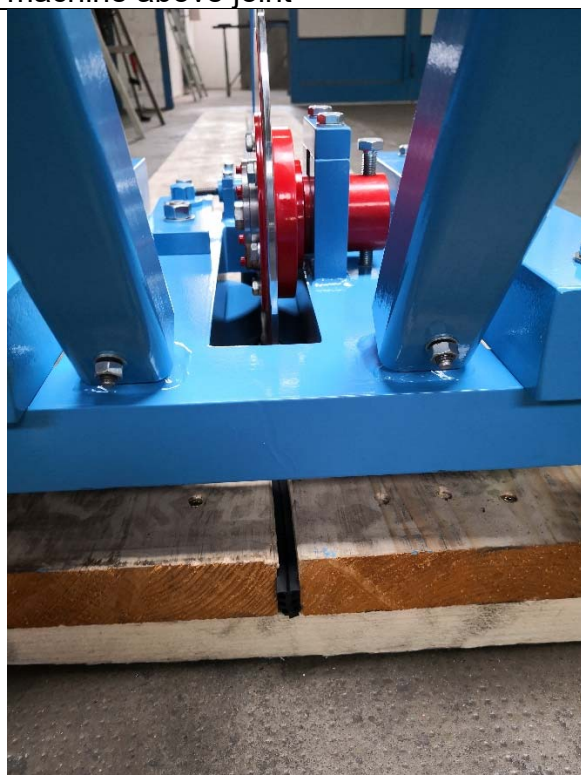




Joint direction sight and push-in disc position for correct orientation of machine above joint



Joint direction sight for correct orientation of machine above joint



Rear view of machine, profile installed



Profile installed

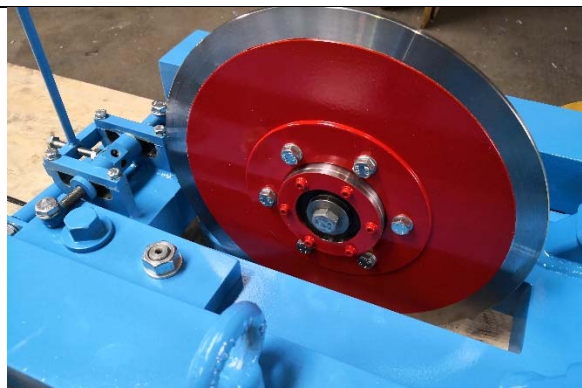
USt-ID-Nummer  
DE 242604690

Bank Account  
Volksbank Nottuln  
IBAN DE43 4016 4352 7809 7738 00  
BIC GENODEM1CNO

## EXCHANGE of Push-in Disc – steps of work



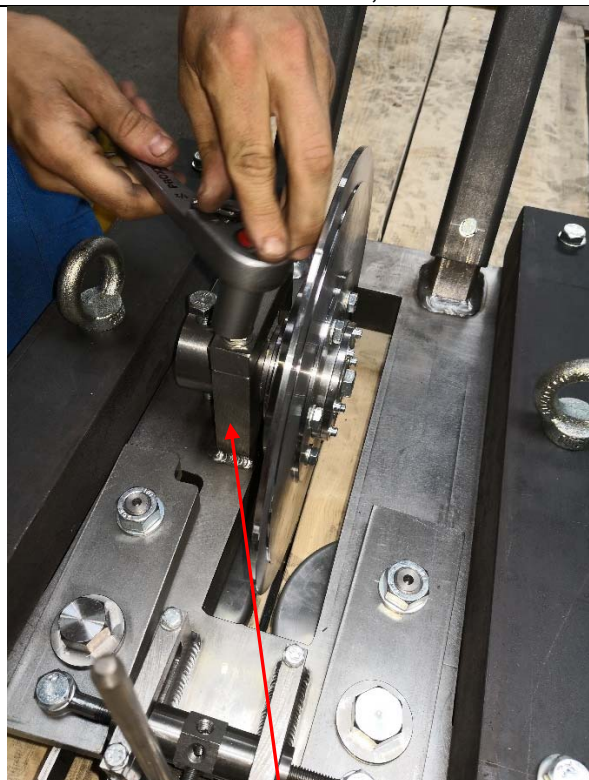
Push-in disc F6: 2,5 mm thick



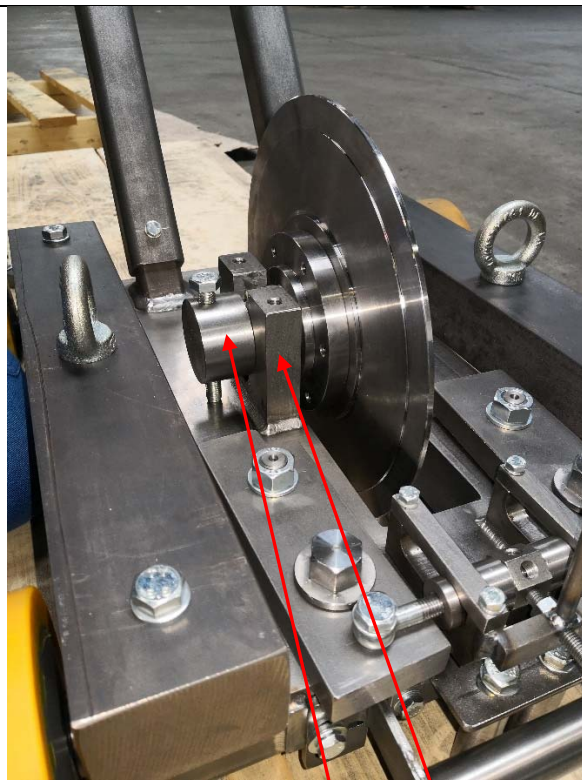
Push-in disc F8 – F10: 4,5 mm thick



Push in disc F12 – F15: 8,5 mm thick



Loose screws on top part  
of clamp holder — of push-in cylinder



Top part of clamp holder  
of push in cylinder — removed

USt-ID-Nummer  
DE 242604690

Bank Account  
Volksbank Nottuln  
IBAN DE43 4016 4352 7809 7738 00  
BIC GENODEM1CNO





Loose center screw and lift the whole push-in cylinder upwards



Empty Lower part of clamp holder of push-in cylinder



Loose outer ring screws and remove push-in disc from disc holder



Disc holder ready for acceptance of exchange push-in disc

Dr. Werner Grabe  
28.8.18

USt-ID-Nummer  
DE 242604690

Bank Account  
Volksbank Nottuln  
IBAN DE43 4016 4352 7809 7738 00  
BIC GENODEM1CNO